



ergonomic
solutions

VOLUME 22 GSA CATALOG

OFFICE

HEALTHCARE

EDUCATION

esiergo.com



Contract Holder

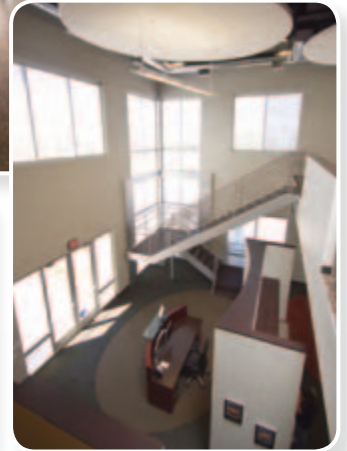




ESI Ergonomic Solutions has been providing superior ergonomic accessories at affordable prices since 1988. Our focus is improving productivity and safety by adding comfort, flexibility and mobility to the computer workstation, catering to office, healthcare, and educational environments. ESI is a Nationally Certified, Woman-Owned business, and GSA Contract Holder. Our product libraries are available on CAP/ GIZA and ProjectSpec. To ensure on-time delivery, most orders are processed and shipped within 48 hours.

We are known throughout the industry for our superior customer service. Consistently going the extra mile for our clients has rendered us unprecedented customer loyalty. Continually evaluating the changing marketplace is an important process in providing the best ergonomic solutions.

ESI realizes the importance of evolving workplace environments and, in turn, develops custom products and solutions to accommodate these changes.



Ordering Is Simple!

If you need assistance, call our Customer Service Department. We're happy to answer your questions or provide recommendations for your ergonomic needs.

Customer Service: 800.833.3746

Factory: 480.517.1871

Fax: 480.517.1872

Web Site: www.esiergo.com

E-mail: info@esiergo.com

Fax your order to: 480.517.1872

E-mail your order to: orders@esiergo.com



Contract Holder

FSS Contract GS-14F-0722G

Contract Period: 9/23/97 to 9/25/2012

FSC Group 75, Part 20

FSC Class: 7510 Office Supplies

Cage Code: 1CTH6

DUNS#: 874792500

Federal Tax ID#: 860955047



CAP, Giza and ProjectSpec libraries available:

www.esiergo.com/resourcecenter

NWBOC®
WBE CERTIFIED

**Nationally Certified
Woman-Owned Business**

Ordering Information

Maximum Order	\$250,000
Minimum Order	\$25
Production Point	Mesa, Arizona
Discount	\$1 - \$5,000 List = 55% off \$5,001 - \$20,000 List = 57.5% off \$20,001 - \$75,000 List = 60% off \$75,001+ List = Negotiable
Payment Terms	Net 30
Government Credit Cards Accepted	Visa, MasterCard, AMEX
Time of Delivery	Most Orders are shipped within 48 hours ARO
FOB Point	Destination – for all orders delivered within the contiguous 48 states.
Warranty Provision	Product Specific, from Lifetime to 1 year
Returned Goods	Restocking charge up to 25% of the order

esi

3	Ordering Information
4-5	Combo Solutions
6-8	Articulating Arms & Mechanisms
9-13	Keyboard Platforms
14-15	Monitor Arms
16	Specialty Monitor Arms & Mounts
17	Keyboard Drawer Slides & Pencil Drawers
18-19	Apollo PAC Stations
20	Titan PAC Stations
21	Mobile Workstation
22-23	LCD Mounts for TVs & Heavy Monitors
24-25	Adjustable Tables
26	Laptop Solutions
27	Accessories & Lighting
28-29	CPU Holders & Utility Carts
30	Environmental Statement
31	Terms and Conditions

Factory & Showroom
4030 East Quenton Drive
Mesa, Arizona 85215

Mailing Address
P.O. Box 21239
Mesa, Arizona 85277-1239

Chicago Showroom
Merchandise Mart
Showroom 10-100

Phone: 480.517.1871

Fax: 480.517.1872

800.833.3746

Combo Solutions

All Solutions include an articulating arm, a keyboard platform, leatherette-covered gel palm rest, nonslip pads, mouse pad, mouse guards and cord management clips at no extra charge. One part number is all you need for a complete system.



Our combo solutions can be ordered in our 100% recyclable, formaldehyde-free R-Series platform material. Look for the recycle symbol.



Solution 90

Ideal for 90° Corners

AA350DS

Articulating Arm

Lift and Lock 8.3" height adjustment

21.75" glide track

Swivels at two points

PL003CC

Keyboard Platform

Standard width 25" cut corner platform

List Price

Solution 90

\$421

25" cut corner platform

Solution 90-R

\$427

Eco-friendly R-Series material



Solution DAT

AA360DAT

Articulating Arm

Lift and Lock 6.5" height adjustment

22" glide track

PL216

XL Swivel Mouse Below

18.75" platform with right or left extra-large swivel below mousing platform

List Price

Solution DAT

\$383

XL Swivel Mouse platform

Solution DAT-R

\$389

Eco-friendly R-Series platform material



Ideal for those who require a precise tilt adjustment

Health & Safety Favorite



Solution ULTRA

Great for Multiple Users



AA360

Articulating Arm

Lift and Lock 7" height adjustment

21" glide track

PL217

Switch-n-Click Convertible Platform

Can be used as mouse in line, mouse over or mouse forward at platform height or mouse above height

Recommended for straightedge work surfaces

List Price

Solution ULTRA

\$375

Radius platform

Not available in R-Series platform material

Solution 1CC



**AA260
Articulating Arm**
Spring assisted 6.25" height adjustment
17" glide track


**PL003CC
Keyboard Platform**
Standard width 25" cut corner platform

Value Engineered

Solution 1CC List Price **\$256**

Cut corner platform

Solution 1CC-R **\$262**

Eco-friendly R-Series platform material 

Solution 2CC



**AA360
Articulating Arm**
Lift and Lock 7" height adjustment
21" glide track


**PL003CC
Keyboard Platform**
Standard width 25" cut corner platform

Most Popular

Solution 2CC List Price **\$330**

Cut corner platform

Solution 2CC-R **\$336**

Eco-friendly R-Series platform material 

Solution 3



**AA360
Articulating Arm**
Lift and Lock 7" height adjustment
21" glide track


**PL215
Swivel Mouse Platform**
18.75" platform with right or left
swivel below mousing platform

Fits in Tight Radius Corners

Solution 3 List Price **\$371**

Swivel mouse platform

Solution 3-R **\$377**

Eco-friendly R-Series platform material 

Solution 4



**AA370
Articulating Arm**
Lift and Lock 16" height adjustment
24.75" glide track

**PLMAC
Mouse Forward Platform**
Reversible 26.5" platform for left- or
right-handed users
For use on straightedge or 21" or larger
diagonal work surface

Extended Reach

Solution 4 List Price **\$412**

Mouse forward platform

Solution 4-R **\$417**

Eco-friendly R-Series platform material 

Articulating Arms

Uncertain About Best Product Choice?

Simply call 800.833.3746 and you'll be connected with one of our friendly and knowledgeable Customer Service specialists who can recommend workable options.

Spring Assisted

Spring Assisted height adjustment allows for effortless positioning of the keyboard platform using a single knob.

Lift and Lock

Lift and Lock articulating arms provide quick and easy height adjustment. To position the platform to the desired height, simply tilt the platform up, then raise or lower. Release the platform and the arm will lock into place.

Extended Reach

With a generous Lift and Lock height range, our AA370 extended reach articulating arm provides additional height adjustability to meet the needs of a wide range of users.

Dial-A-Tilt (DAT)

The Lift and Lock Dial-A-Tilt articulating arm is ideal for those who require precise tilt adjustment.

Positive Tilt LockOut (LO)

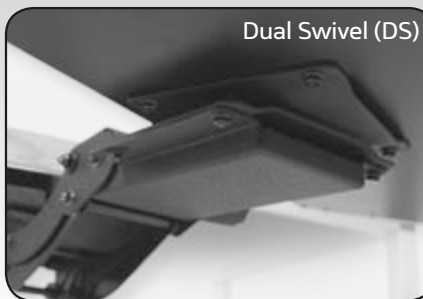
This option encourages low-risk postures by preventing the user from placing the platform in a positive tilt position.

Dual Swivel (DS)

Need a little more flexibility with your keyboard? Our Dual Swivel option adds a swivel plate between the platform and the arm providing the user additional adjustability.



Dial-A-Tilt (DAT)



Dual Swivel (DS)

Spring Assisted Articulating Arm



260 Series

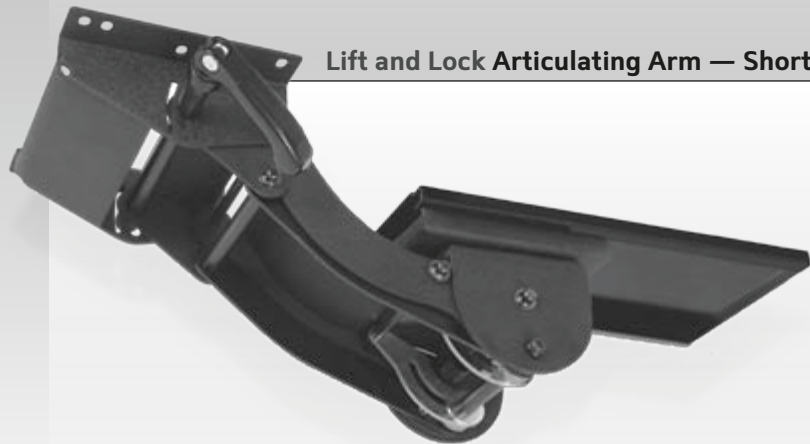
Features

- +10° / -15° tilt adjustment and 360° rotation
- Soft touch knob for simultaneous height and tilt adjustment
- 17" glide track
- 6.25" height adjustment (1.25" above to 5" below track)

Options

		List Price
Standard	AA260	\$133

Lift and Lock Articulating Arm — Short Track



330 Series

Features

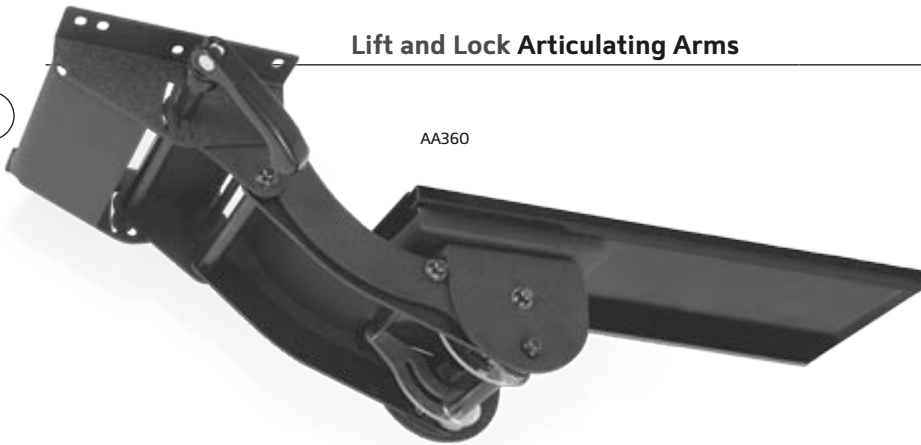
- Lift and Lock height adjustment
- Release handle for independent tilt adjustment
- +/-15° tilt adjustment and 360° rotation
- Positions platform flush with the work surface
- 17.75" glide track (platform may not completely retract in its stored position)
- 7" height adjustment (2.5" above to 4.5" below track)

Options

		List Price
Short Track	AA330	\$207

Lift and Lock Articulating Arms

360 Series



AA360

Track Length Options

Articulating arm tracks can be cut to fit work surfaces of varying depths. Call our Customer Service specialists for details.

Installer Friendly

The AA330, AA360 and AA370 series tracks are standard with double-sided tape to assist with installation.

Features

Lift and Lock height adjustment
Release handle for independent tilt adjustment*
+/-15° tilt adjustment
Positions platform flush with the work surface
360° rotation (excluding DAT models)

Options

		List Price
Standard	AA360	\$207
	21" glide track	
	7" height adjustment (2.5" above to 4.5" below track)	
Dial-A-Tilt	AA360DAT	\$217
	* Soft touch knob for precise tilt adjustment	
	22" glide track	
	6.5" height adjustment (.25" above to 6.25" below track)	
Dual Swivel	AA360DS	\$244
	21" glide track	
	7" height adjustment (3.75" above to 3.25" below track)	
Positive Tilt Lockout	AA360LO	\$219
	21" glide track	
	7" height adjustment (2.5" above to 4.5" below track)	
	0 to -15° tilt adjustment	

Extended Reach Articulating Arms

370 Series



AA370DAT

Features

Lift and Lock height adjustment
Release handle for independent tilt adjustment*
+/-15° tilt adjustment
Positions platform flush with the work surface

Options

		List Price
Standard	AA370	\$278
	24.75" glide track	
	16" height adjustment (8" above to 8" below track)	
Dial-A-Tilt	AA370DAT	\$310
	* Soft touch knob for precise tilt adjustment	
	24.75" glide track	
	14.75" height adjustment (6" above to 8.75" below track)	
Dual Swivel	AA370DS	\$298
	24.75" glide track	
	16" height adjustment (9.25" above to 6.75" below track)	
Positive Tilt Lockout	AA370LO	\$282
	24.75" glide track	
	16" height adjustment (8" above to 8" below track)	
	0 to -15° tilt adjustment	



All arms are composed of at least 96% Cold Rolled Steel (CRS) and are recyclable.



Dual Sit-Stand Arms

Our Dual Sit-Stand Arms are ideal where an extra-sturdy adjustable arm is needed for heavy-use typing or areas where the user switches between sitting and standing positions frequently. Dual Sit-Stand Arms are well suited for height adjustable tables and other secondary work surfaces.



Knob for tilt adjustment +/-15°



Lightly lift the paddle to adjust platform height

Sit-Stand Arms



400 - 500 Series

Features

- 19" height adjustment (12.5" above to 6.5" below track)
- Paddle actuator for easy height adjustment
- Knob for independent +/-15° tilt adjustment
- Slim arms for optimal knee clearance (less than .75" width)
- Load capacity: 150 lbs

Options

		List Price
Fixed Mount	AA400	\$527
Fixed Mount Sit-Stand Arm		
Overall width needed under work surface: 28"		
Overall depth needed under work surface: 11"		
Retractable	AA500	\$817
Retractable on two 23" slides		
Overall width needed under work surface: 28"		
Overall depth needed under work surface: 30"		

Accessories

		List Price
Keyboard Platform	PL045	\$134
27" platform drilled specifically for use with AA400 and AA500		
Includes detachable palm rest, mouse pad, mouse guards and cord management clips		

Keyboard Platforms

All platforms include detachable gel palm rests, mouse pad, mouse guards, and cord management clips at no extra charge. Most platforms can be ordered in custom sizes. Please contact Customer Service for more information.

Rectangle

Rectangle platforms accommodate both the keyboard and mouse on the same level. The single palm rest allows for left- or right-handed mousing.

Cut Corner

Cut Corner platforms work well on straight edge and corner diagonal work surfaces.

Mouse Forward

Our Mouse Forward platforms comfortably place the mousing area closer to the user.

Radius

Radius shaped platforms not only complement radius corner work surfaces, but also allow the user to position the keyboard closer to the work area to reduce reach.

Natural

Our Natural platform line reflects the true science of ergonomics. These platforms were designed to hold Microsoft® Natural, Natural Elite and other ergonomically designed keyboards, so comfort and efficiency are assured.

Swivel Mouse

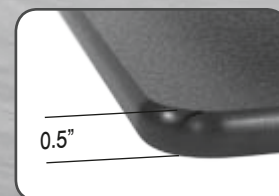
Where keyboard storage is a challenge, the space-saving Swivel Mouse design is the perfect answer. The mousing area swivels under the keyboard, reducing the storable size of the platform.

Eco-Friendly R-Series



The R-Series platforms are composed of 100% post consumer materials, making them completely recyclable.

They are free of formaldehydes and carcinogens and emit no VOCs (Volatile Organic Compounds).



The leatherette-covered gel palm rests are equally environmentally friendly. Both the gel core and the leatherette material are free of formaldehydes and carcinogens. The leatherette material can be cleaned and sanitized. Removal of the entire palm rest allows for thorough cleaning of the platform.

Perfect Fit

ESI provides platforms that can accommodate nearly any work surface shape, size and user preference.

PL003CC

Rectangle Keyboard Platforms

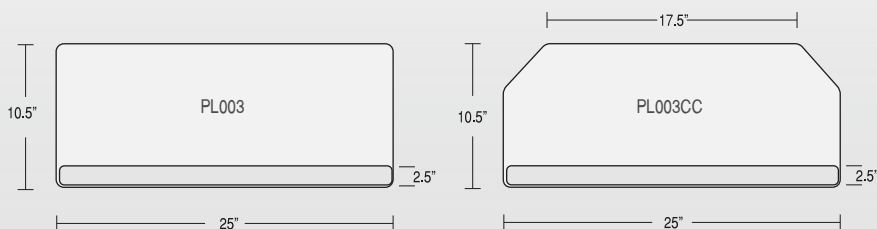
Features

25" width standard

Available in custom widths from 20" to 30" at no additional charge

Accommodates both keyboard and mouse on the same level

Detachable single palm rest for left- or right-handed mousing



Options

		List Price
Rectangle	PL003	\$123
Rectangle	PL003-R	\$129
Eco-friendly R-Series platform material		
Cut Corner	PL003CC	\$123
Can be used with 17" or larger diagonal work surfaces		
Cut Corner	PL003CC-R	\$129
Eco-friendly R-Series platform material		

Mouse Forward Keyboard Platforms

Features

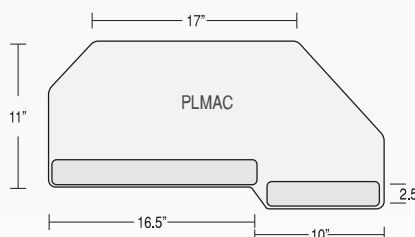
26.5" width

Platform reverses for left- or right-handed users

For use on straightedge or 21" or larger diagonal work surfaces

Options

		List Price
Mouse Forward	PLMAC	\$134
Mouse Forward	PLMAC-R	\$139
Eco-friendly R-Series platform material		



Radius Keyboard Platforms

Features

25" width

Accommodates both keyboard and mouse on the same surface

For use on most 42" and larger radius work surfaces

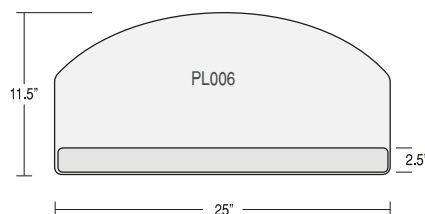
Detachable single palm rest for left- or right-handed mousing

Options

		List Price
Radius	PL006	\$123

Radius	PL006-R	\$129
--------	---------	-------

Eco-friendly R-Series platform material



Natural Keyboard Platforms

Features

27.25" width

Designed for use with Natural Keyboards

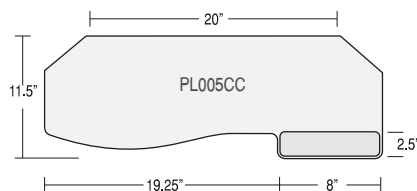
Right-handed is standard (please specify if left-handed is needed)

Options

		List Price
Natural	PL005CC	\$112

Natural	PL005CC-R	\$121
---------	-----------	-------

Eco-friendly R-Series platform material



Eco-Friendly

Most platforms can be ordered in our 100% recyclable, formaldehyde-free R-Series platform material.

Slide-Out Mouse Keyboard Platforms

Features

18.75" width while in closed position

27.75" width while in open position

Left to right slide-out mouse tray

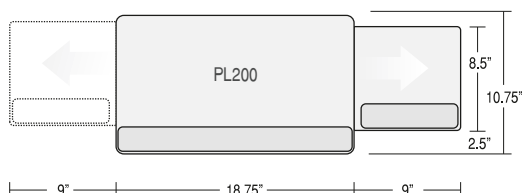
Not for use with DAT models

Options

		List Price
Slide-Out Mouse	PL200	\$168

Slide-Out Mouse	PL200-R	\$174
-----------------	---------	-------

Eco-friendly R-Series platform material



Swivel Mouse Below Keyboard Platforms

Features

- Palm rest for mousing surface
- 18.75" platform with a swivel-below mousing platform
- Provides an extensive range of adjustability

Options

		List Price
Swivel Mouse	PL215	\$164

26.375" overall length while open — 22.25" while in closed position

Swivel Mouse	PL215-R	\$170
--------------	----------------	--------------

Eco-friendly R-Series platform material

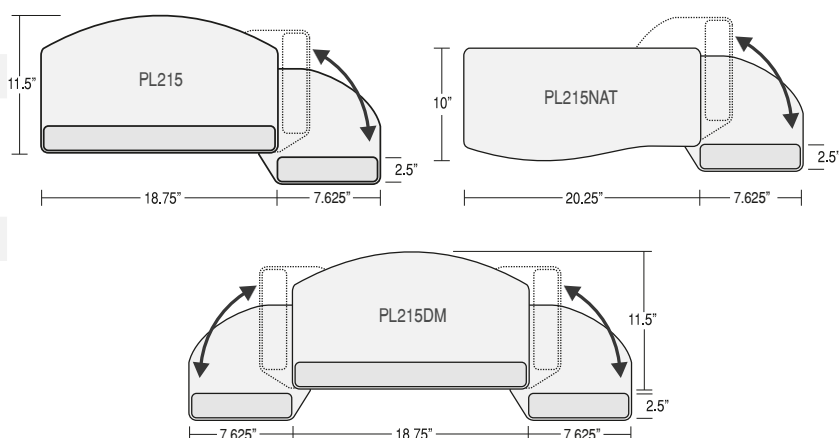
Dual Swivel Mouse	PL215DM	\$216
-------------------	----------------	--------------

Swivel-below mousing platform on both sides

34" overall length while open
30.25" one side open — 26.25" while in closed position

Natural	PL215NAT	\$154
---------	-----------------	--------------

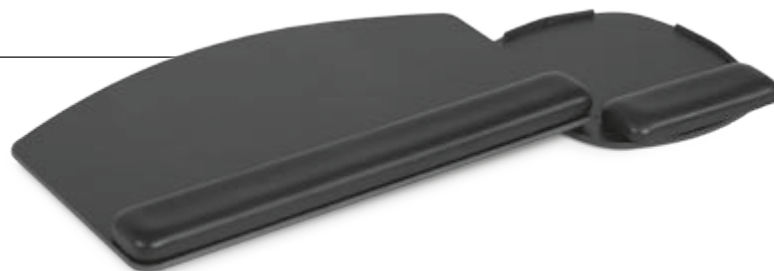
20" Natural platform with swivel-below mousing platform
Designed for use with natural-shaped keyboards
28" overall length while open — 23" while in closed position



XL Swivel Mouse-Below Keyboard Platforms

Features

- Palm rest for mousing surface
- 18.75" platform with an extra-large swivel-below mousing platform
- Provides an extensive range of adjustability



Options

		List Price
XL Swivel Mouse	PL216	\$166

26.75" overall length while open — 21.75" while in closed position

XL Swivel Mouse	PL216-R	\$172
-----------------	----------------	--------------

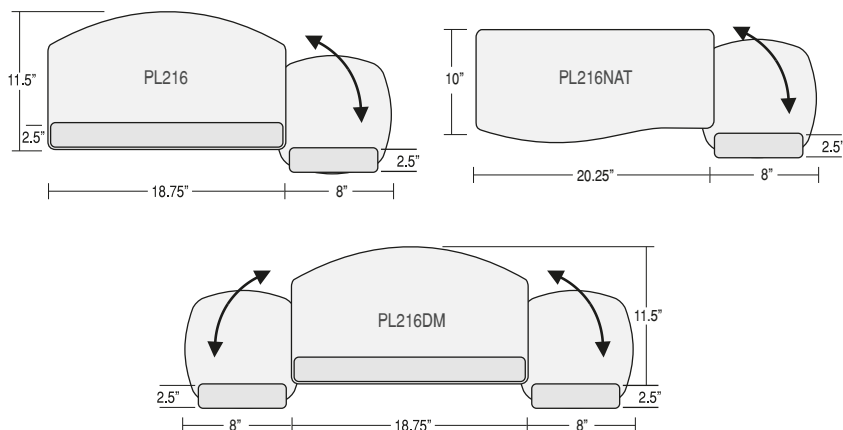
Eco-friendly R-Series platform material

Dual XL Swivel Mouse	PL216DM	\$218
----------------------	----------------	--------------

XL swivel-below mousing platform on both sides
35.25" overall length while open
30.75" one side open — 25.5" while in closed position

Natural	PL216NAT	\$156
---------	-----------------	--------------

20.25" Natural platform with XL swivel-below mousing platform
Designed for use with natural-shaped keyboards
28.25" overall length while open — 23.75" while in closed position



Switch-n-Click Convertible Keyboard Platforms

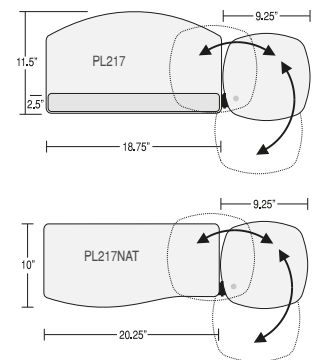
Features

- Independent tilt and swivel mousing platform
- Can be used as mouse in line, mouse over or mouse forward
- Mousing platform can be placed at platform height or mouse above height
- Reversible design; mouse platform clicks in on left or right side — no tools required
- Provides an extensive range of adjustability

Options

		List Price
Radius	PL217	\$168
Natural	PL217NAT	\$158

Designed for use with Natural keyboards



Just Click and Go!

The Switch-n-Click mousing platform not only swivels and tilts independently, it can be placed at two different heights and three different positions to meet the individual needs of each user.

The PL217 keyboard platform can also be quickly and easily configured for left- or right-handed users. Simply detach the mousing platform and click it into the other side.



Mouse in Line

Mouse can be positioned in direct line with the keyboard at either mouse above height or platform height.



Mouse Over

Mouse can be positioned over the 10-key to decrease reach.



Mouse Forward

Mouse can be positioned closer to the body for improved ergonomic comfort at either mouse above height or platform height.

Clip-on Palm Rest



Features

7"W x 2.5"D

For use with the PL217 platform



		List Price
7" Wide	ACMCLIPLG	\$42

Replacement Palm Rests



Features

Call Customer Service with your measurements and specifications

Please specify platform part number when ordering

		List Price
25" Wide	ACRWMLG25	\$51
18" Wide	ACRWMLG18	\$46
8" Wide	ACRWMLG8	\$33
7" Wide	ACRWMLG7	\$33

Natural Palm Rest



Features

For use with Microsoft® Natural, Natural Elite and other ergonomically designed input devices

Soft sculpted pad conforms to the keyboard and provides correct palm/wrist neutral position

Complete with nonslip backing to adhere to built-in palm support

		List Price
Natural	ACEWMLG	\$44

Monitor Arms

The New EDGE Series

Value Engineered

STYLE meets VALUE with this sleek and value-engineered monitor arm. The slim design complements the latest in monitor aesthetics at a competitive price. Shallow workstations are no challenge for the EDGE as it can be retracted to a mere 3.5" from the wall. Both Desk Clamp and Grommet Mount come standard for multiple installation applications. The Quick Release feature enables efficient replacement of monitors to keep user downtime at a minimum.

- Value-engineered for the competitive marketplace
- Dynamic and effortless adjustment
- Accommodates users with limited depth work areas
- Quick Release component for quick and easy monitor exchanges
- Enclosed cable management feature
- Monitor tilts +30°/-25°
- Multiple points of adjustment make sharing information convenient
 - 360° swivel at two points
 - Folds to achieve minimal footprint

Slim Profile

The EDGE monitor arm presents a slim profile when in the folded position making the EDGE Series a perfect match for users with limited available work surface depth.

Enclosed Cable Management

Cables can be routed inside internal pathways along the underside of the arm for a clutter-free work area.

Monitor Quick Release

VESA 75mm or 100mm compatible

Effortless Adjustment

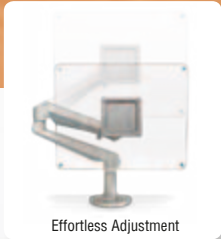
Gas spring technology provides smooth height adjustability.



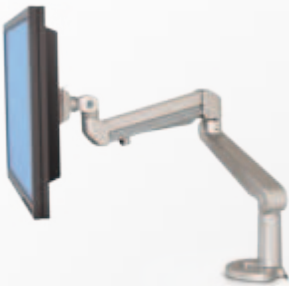
Enclosed Cable Management



Monitor Quick Release



Effortless Adjustment



Features (per monitor arm)

Height Adjustment Range: 6.5" - 19.5" (13" total)	VESA 75mm or VESA 100mm compatible
Monitor Extension: 21"	Desk Clamp
Monitor Retraction: 3.5"	Clamps to surfaces 7/8" - 2" thick
Weight Capacity: 6.5 - 17.6 lbs	Grommet Mount
Includes both Desk Clamp and Grommet Mount	Requires a hole diameter 5/16" - 2" wide, and accommodates surfaces up to 2" thick

EDGE Options

		List Price
Silver	EDGE	\$319
Black	EDGE-BLK	\$349
Special order - call Customer Service for details		
White	EDGE-WHT	\$349
Special order - call Customer Service for details		

EDGE2 Options

		List Price
Silver	EDGE2	\$548
Black	EDGE2-BLK	\$599
Special order - call Customer Service for details		
White	EDGE2-WHT	\$599
Special order - call Customer Service for details		

01 Series

The 01 Series Monitor Arms are comprised of a minimum of 99% post consumer recycled products. The arm, pole and clamp are fully recyclable.

- Easy lever height adjustment makes changing monitor height quick and easy**
- Arm extends 24" from pole
- Arm retracts to 5" to save space
- Height adjusts from 3" to 20" (17" total)
- Monitor easily rotates from landscape to portrait
- Available with Grommet Mount or Desk Clamp
- Load capacity up to 17.5 lbs per mounting arm*
- Conforms to VESA 75mm and VESA 100mm

Features

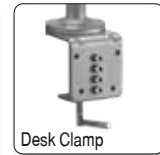
Supports one monitor
Load capacity: 17.5 lbs
16" Pole

Options

		List Price
Desk Clamp	MRFS01DC	\$372
Grommet Mount	MRFS01GM	\$372



Accommodates surfaces from 1/2" to 2" thick; requires a hole diameter of 7/8" - 2 1/8"



Accommodates surfaces from 1/2" to 4 1/2" thick

01 Series

2 Monitors



Features

Supports 2 monitors
Load capacity: 35.2 lbs
16" pole

Options

		List Price
Desk Clamp	MMFS2DC	\$525
Grommet Mount	MMFS2GM	\$525

01 Series

3 Monitors



Features

Supports 3 monitors (maximum width per monitor: 18.5" — bezel measured left to right)[†]
Load capacity: 52.8 lbs
16" pole

Options

		List Price
Desk Clamp	MMFS3DC	\$643
Grommet Mount	MMFS3GM	\$643

01 Series

4 Monitors



Features

Supports 4 monitors
Load capacity: 70.4 lbs
28" pole

Options

		List Price
Desk Clamp	MMFS4DC	\$1,016
Grommet Mount	MMFS4GM	\$1,016

01 Series

6 Monitors



Features

Supports 6 monitors (maximum width per monitor: 18.5" — bezel measured left to right)[†]
Load capacity: 79.2 lbs*
28" pole

Options

		List Price
Desk Clamp	MMFS6DC	\$1,203
Grommet Mount	MMFS6GM	\$1,203

01 Series Accessories

Item	Description	List Price
VESA 100x200	Converts a 75mm or 100mm VESA mount to attach to a 100mm x 200mm VESA monitor	\$24
MMFS2KIT	Converts an existing MRFS01 single monitor arm to a dual arm	\$276
MMFS3KIT	Converts an existing MMFS2 dual arm to a triple arm	\$131

* Load capacity up to 17.5 lbs. per arm for all systems except the six-monitor solution, which has a load capacity of 13.2 lbs. per arm

** Lever height adjustment applies to single monitor mounts only

[†] To configure the MMFS3 and MMFS6 to accommodate larger monitors, please call Customer Service

01 Series

Single Monitor



Features

Supports one monitor
Load capacity: 26.5 lbs
16" Pole
For shallow work stations (does not include arm extensions)

Options

		List Price
Desk Clamp	MRFS-STUBBY-DC	\$283
Grommet Mount	MRFS-STUBBY-GM	\$283

Specialty Monitor Arms & Mounts

Adjustable Workstation

Features

Arms extend to 24" — Retract to 5"
Load capacity: 17.5 lbs per mounting arm
Easy lever height adjustment makes changing monitor height quick and easy**
Includes two MRFS01 monitor arms and one PL003 platform
25" leatherette-covered gel palm rest
28" pole

Options

		List Price
Desk Clamp	MRFSWSDC	\$570
Grommet Mount	MRFSWSGM	\$570



Best suited for standing applications

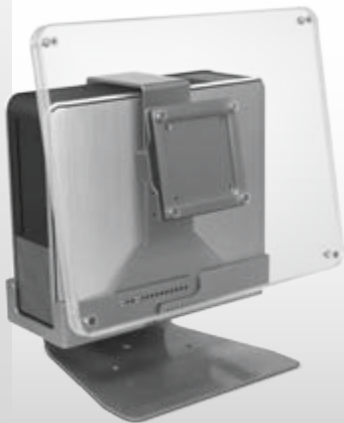
Security Solution

Ideal for Public Environments

Features

All-in-one unit bolts directly to work surface
Deters theft and unauthorized CPU tampering
Monitor tilts +15°/-30° depending on the monitor

Supports small form-factor CPUs
10.5"W - 15"W x 11"D - 18"D x 4"H
Conforms to VESA 75mm and VESA 100mm
Note: May not be available for 48-hour ship



Surface Mount

SECURE-PC

List Price

\$721

Wall Mount Monitor Arm

Features

Single 12" extension arm — total reach 16.25"
Monitor easily rotates from landscape to portrait
Load capacity: 22 lbs
Conforms to VESA 75mm and VESA 100mm

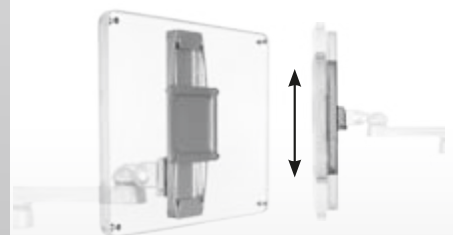
Options

		List Price
Wall Mount	MRFS-WALL	\$302
Wall stud mounting required		
Slat/Rail Mount	MRFS-SLAT	\$327

Fits slat/rail in widths of .75" - 2.75"



Adjustable Monitor Slide



Shown with 01 Series monitor arm

Features

Height adjustable 5" above and 5" below mount
Load capacity: 22 lbs
Conforms to VESA 75mm and VESA 100mm

Slide Mount

SLIDE-MR

List Price

\$123

SLIDE-MR is an add-on component for the 01 Series monitor arms. (sold separately)

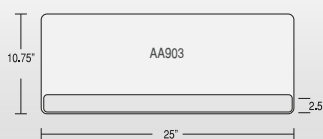


Keyboard Drawer Slides and Pencil Drawers

When you need a low-cost option for storage below the work surface, keyboard drawer slides and pencil drawers are the ideal solution. They are in stock and ready to ship within 48 hours and include all mounting hardware necessary for installation.



Keyboard Drawer Slide



Features

- Standard 25" width accommodates both keyboard and mouse
- Custom widths available
- Retractable on 15" ball bearing slides

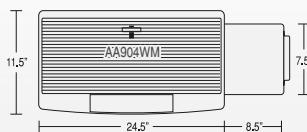
Rectangular

AA903

List Price

\$145

Keyboard Drawer Slide



Features

- Accommodates keyboard and slide-out left or right mousing area
- Retractable on 15" ball bearing slides
- Black molded plastic

Slide-Out Mouse

AA904WM

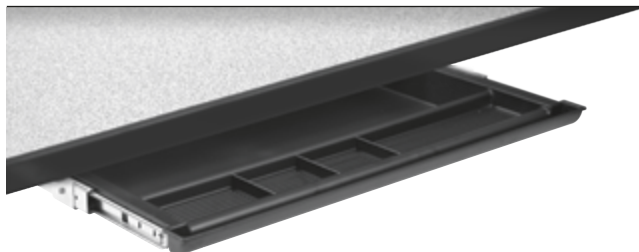
List Price

\$101



Convenient storage compartment for supplies

Pencil Drawer



Organizational Space!

The ACPD01 Pencil Drawer provides ample storage space under the desk. The durable 16" ball bearing slides allow the 2" slim molded tray to slide under the desktop and out of sight.



Features

- Retracts on 16" ball bearing slides
- Inside drawer dimensions: 20.5" W x 16.25" D x 2" H
- Opening requirements: 23" W x 16.25" D x 2" H
- Black molded plastic tray

ACPD01

List Price

\$86

Apollo PAC Stations

The Apollo 6-PR and Apollo 2-PR PAC (Public Access Computer) Stations are designed to accommodate the adult population from the 5th percentile of females seated to the 95th percentile of males standing.

The Apollo series instantly adjusts to provide ergonomic comfort to users, no matter their statures.

Performance & Features

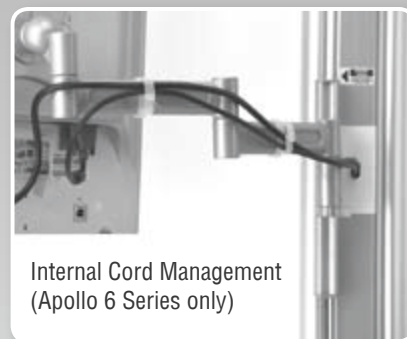
The Apollo Series includes five basic configurations, each designed to meet the specific ergonomic needs in ever-changing environments. The Apollo 6 models have the ability to encompass all cables within the track, eliminating the accidental detachment of components and wires. The Apollo 2 models include wire managers along the side of the track to ensure cables are neatly routed.

All components are modular and interchangeable, enabling reconfigurations to meet changing needs. Modular accessories including laptop trays, writing surfaces and phone trays are also available (not shown). Call for details.

- Keyboard platform accommodates both left- and right-handed users.
- The 8" arms are easy to assemble and provide a wide range of configuration possibilities.
- Innovative gas strut assisted shuttle system provides effortless height adjustment of the keyboard and monitor.
- Easily adjusts for seated or standing applications.
- Provides proper ergonomic positioning to accommodate the 5th to the 95th percentile, either seated or standing.

**OSHPD
Approved**

OSHPD approval documents available on www.esiergo.com



Internal Cord Management
(Apollo 6 Series only)



Shuttle Lift System With
Integrated Safety Stops

Modular

The Apollo PAC Station can be configured to suit the needs of specific environments. Easy-touch shuttles provide a quick, 7 1/2" of height adjustment for the monitor and keyboard tray mounted along the 60" aluminum track.

Below are five basic Apollo configurations.

Common Features

60" wall mounted track
 VESA 75mm and 100mm compatible
 Track mounted CPU holder (accommodates various cpu sizes including slim form factors)
 Total system weight capacity: 500 lbs
 Shuttle weight capacity: 17.5 Lbs
 Easy-touch shuttles provide 7 1/2" of arm height adjustment

Arm extension:
 0-extension arm = 3 1/2"
 2-extension arm = 20 3/4"
 3-extension arm = 28 3/4"
 Quick release feature standard for both monitor and platform
 Includes 25" PL003 P-Series rectangular keyboard platform

Apollo 6-PR



Features

6-channel track
 2-extension arm with shuttle for monitor
 3-extension arm with shuttle for keyboard platform
 Integrated cord management

		List Price
Premium	APOLLO 6-PR	\$1,946

Apollo 6-EC



Features

6-channel track
 0-extension arm with shuttle for monitor
 2-extension arm with shuttle for keyboard platform
 Integrated cord management

		List Price
Economy	APOLLO 6-EC	\$1,716

Apollo 2-PR



Features

2-channel track
 2-extension arm with shuttle for monitor
 3-extension arm with shuttle for keyboard platform
 Cord management clips provided

		List Price
Premium	APOLLO 2-PR	\$1,701

Apollo 2-EC



Features

2-channel track
 0-extension arm with shuttle for monitor
 2-extension arm with shuttle for keyboard platform
 Cord management clips provided

		List Price
Economy	APOLLO 2-EC	\$1,453

DOCH-MR



Features

Wire document holder for Titan and Apollo Series workstations
 Attaches to monitor mounting plate

		List Price
	DOCH-MR	\$109

Apollo 1-LT



Features

Track mounted laptop holder
 1-channel track — 24" height
 2-extension arm with shuttle
 Shuttle provides 7 1/2" of easy-touch arm height adjustment

		List Price
	APOLLO 1-LT	\$663

Titan PAC Stations

Efficient Use of Space

The Titan PAC Stations allow for computer use in areas not suitable for a traditional workstation. PAC Stations enable the monitor, keyboard and CPU (if chosen) to slide independently for optimal positioning.

- Monitor and keyboard can be moved vertically on the track to desired height
- Mousing platform can be adjusted for left- or right-handed mousing
- Expandable keyboard platform folds up or down to save space; mouse holder located under mousing platform secures mouse when stored in upright position
- Monitor easily rotates from landscape to portrait
- VESA 75mm and 100mm compatible
- Ideal for healthcare facilities, schools and other limited space areas
- Maximum monitor weight: 26.5 lbs.



Track Mounted Work Stations

Titan Series

Features

VESA 75mm and 100mm compatible monitor mount

Fold-up, expandable keyboard tray with palm rest

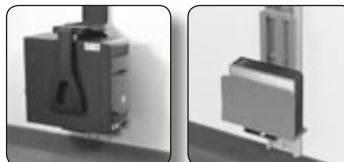
Left or right-handed mousing area with mouse holder

Options

		List Price
Single Track	MRWT01	\$570
	One 31.5" aluminum alloy wall track	
Dual Track	MRWT02	\$977
	Two 31.5" aluminum alloy wall tracks (63" total height)	
	Includes CPU holder	

CPU Holder Options

Available options include a locking CPU holder, as well as a small form factor CPU holder. Call Customer Service for more information.



Titan 01 Series



Features

VESA 75mm and 100mm compatible monitor mount

01 Series articulating monitor arms (see page 16)

Extended keyboard platform

Options

		List Price
Single Track	MRWT01-MR	\$819
	One 31.5" aluminum alloy wall track MRFS01 single monitor arm	
Single Track	MRWT01-MR2	\$1,003
	One 31.5" aluminum alloy wall track MMFS2 dual monitor arm	
Dual Track	MRWT02-MR	\$1,130
	Includes two 31.5" aluminum alloy wall tracks (63" total height) MRFS01 single monitor arm and CPU holder	
Dual Track	MRWT02-MR2	\$1,319
	Includes two 31.5" aluminum alloy wall tracks (63" total height) MMFS2 dual monitor arm and CPU holder	

Titan ELITE Series



Features

VESA 75mm and 100mm compatible monitor mount

ELITE Series articulating monitor arms (see page 15)

Extended keyboard platform

Options

		List Price
Single Track	MRWT01-EL	\$1,030
	One 31.5" aluminum alloy wall track ELITE single monitor arm	
Single Track	MRWT01-EL2	\$1,220
	One 31.5" aluminum alloy wall track ELITE2 dual monitor arm	
Dual Track	MRWT02-EL	\$1,338
	Two 31.5" aluminum alloy wall tracks (63" total height) ELITE single monitor arm and CPU holder	
Dual Track	MRWT02-EL2	\$1,527
	Two 31.5" aluminum alloy wall tracks (63" total height) ELITE2 dual monitor arm and CPU holder	

Mobile Workstation

On Wheels

Workstation On Wheels

Mobility

The Workstation On Wheels (WOW) combines generous workspace with space-saving accessibility.

- Desktop or laptop self-contained computer cart
- Effortless height adjustment and mobility
- Platform height adjustment of 28" to 41"
- Pneumatic lift platform with wire controller
- 5-star base with heavy-duty casters (2 lockable)
- Includes cable management system
- Adjustable CPU holder
- Fixed height monitor mount
- Detachable palm rest

Features

Platform measurements:

- Overall: 26.5"W x 22.5"D
- Back edge: 11.5"
- Side edge: 15"
- Thickness: 7/8"

Base measurements:

- Diameter: 28"
- Weight capacity: 20 lbs

WOW

List Price

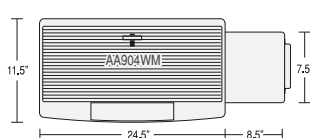
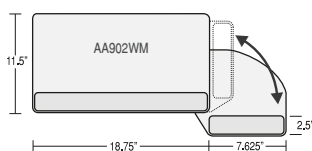
\$1,221



Optional WOW Accessories

Custom options available.
Call for details

Keyboard Drawer Slides



Options

Swivel Mouse

AA902WM

List Price

\$168

18.75" platform with left or right swivel-below mouse platform
15" ball bearing slides
Black P-Series Phenolic material
Detachable palm rests

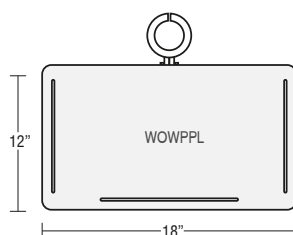
Slide-Out Mouse

AA904WM

\$101

Keyboard platform and slide-out left or right mousing area
15" ball bearing slides
Includes compartment for supplies
Black molded plastic

Printer Platform



Features

18"x 12" platform with friction squares and metal guards to secure printer
Weight capacity: 9 lbs

WOWPPL

List Price

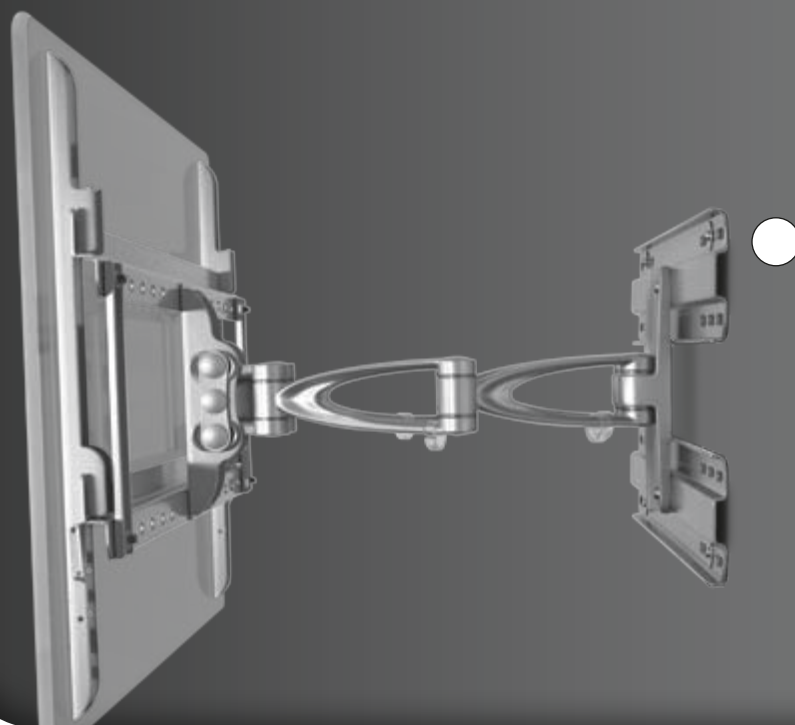
\$194

LCD Mounts

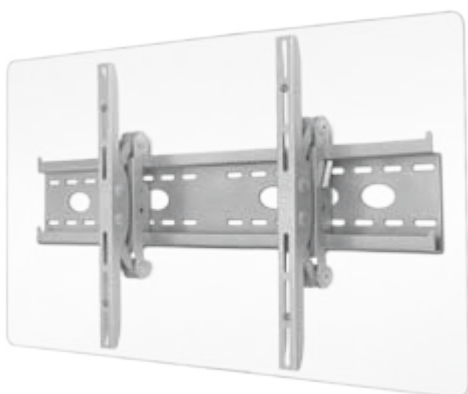
For TVs and Heavy Monitors

Put your flat screen TVs on display with our flat panel LCD TV mounts.

Features include rugged steel construction and durable powder coated finishes. Safety latches secure the screen to the mount and adjustable mounting brackets accommodate different LCD mounting patterns.



Fixed LCD TV Wall Mount



Features

Accommodates differences in LCD mounting patterns
Mounting brackets adjust from 4"W - 31.5"W
Screen pivots +/-15°
Safety latch secures screen to mount

Supports 37" - 65" screens
Weight capacity: 176 lbs
Overall size: 33.8"W x 19.7"H x 4"D

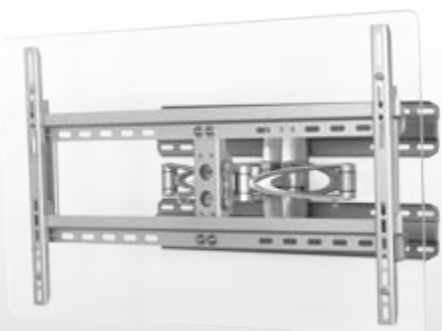
Fixed

TV-LT

List Price

\$282

Articulating LCD TV Wall Mount



Features

Accommodates differences in LCD mounting patterns
Mounting brackets adjust from 4"W - 31.5"W
Screen pivots +/-15°
Safety latch secures screen to mount
Supports 37" - 46" screens

Weight capacity: 110 lbs
Overall size: 33.8"W x 20.3"H
Retracts to 8.7" — extends to 21.5"
Swings to 160° left or right

Articulating

TV-LS

List Price

\$526

Easy Positioning

The TV-LS features a retractable TV mounting system that allows the screen to be extended to 21.5" from wall



Heavy-Duty LCD Monitor Arm

Serious Support

The Kalibur combines the ease of movement with built-in cable management and a quick-connect monitor mount to support heavy monitors from 17.5 to 33 lbs.

Features

- Heavy-duty cylinder provides effortless adjustment
- Load capacity: 17.5 - 33 lbs
- Available with Desk Clamp or Grommet Mount (specify DC or GM when ordering)
- Arm extends 23.75" from pole
- Arm retracts to 4" from pole
- Built-in cable management
- Quick release connector
- Conforms to VESA 75mm and VESA 100mm

KALIBUR Options

Desk Clamp	KALIBURDC	List Price \$544
Clamps to surfaces .75" to 2" thick		

Grommet Mount	KALIBURGM	\$544
Requires a hole diameter of .75" to 2" and accommodates surfaces up to 2" thick		

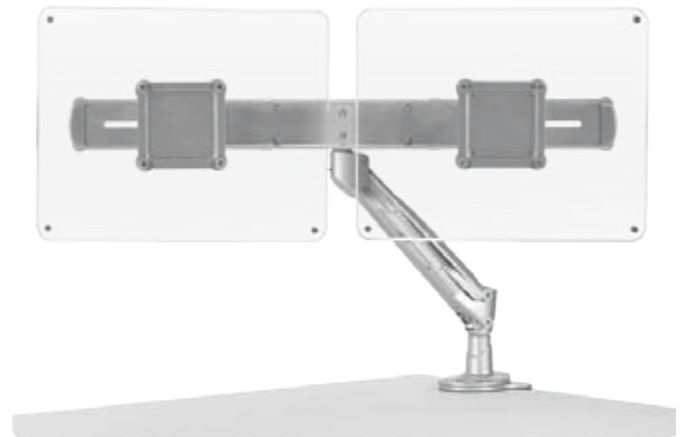
KALIBUR2 Options

Desk Clamp	KALIBURDC	List Price \$609
Clamps to surfaces .75" to 2" thick		

Grommet Mount	KALIBURGM	\$609
Requires a hole diameter of .75" to 2" and accommodates surfaces up to 2" thick		



For use with LCD monitors that weigh at least 17.5 lbs



KALIBUR Series Conversion Kit

- Converts an existing KALIBUR arm to a dual monitor KALIBUR2 arm
- Compatible with KALIBUR Series monitor arm
- Kit Includes:
 - Dual Cross Bar
 - Large Desk Clamp

Conversion Kit	KALIBUR2KIT	List Price \$286
----------------	-------------	---------------------

Includes larger desk clamp, clamps to surfaces .75" to 2" thick



Mobile LCD TV Mount



Enclosed Cord Management



Multiple Height Adjustment



Four Heavy-duty Casters (Two Locking)

Features

- Supports 32" - 52" screens
- Weight capacity: 110 lbs
- Accommodates differences in LCD mounting patterns
- Mounting brackets adjust from 4"W - 23.6"W
- Mount LCD at various heights along pole from 47.2" - 63"
- Overall size: 32.3"W x 65"H x 24.4"D
- Includes an aluminum shelf for peripherals
- Shelf dimensions: 21.7"W x 13.8"D

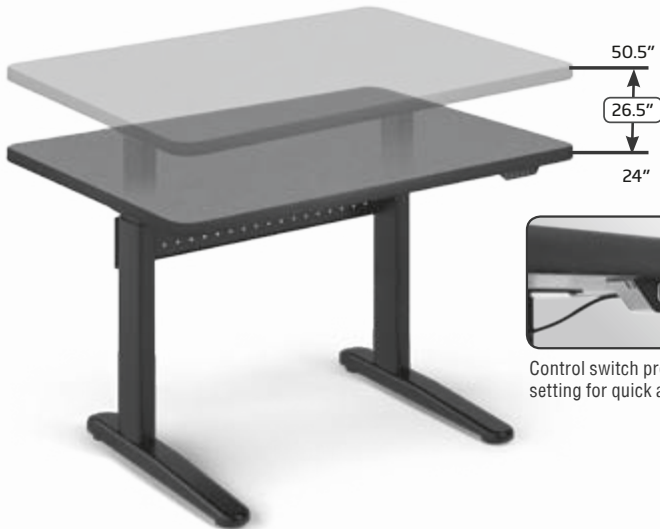
Mobile	TV-CADI	List Price \$1,157
--------	---------	-----------------------

May not be available for 48-hour ship

Adjustable Tables

Work Surface Ergonomics

The ability to adjust the height of the work surface can dramatically increase productivity of the user.



Control switch provides a 3-position memory setting for quick and accurate adjustments

Electric

The precision drive of electric adjustable bases provides quick and effortless height adjustment of the work surface. Raise or lower the work surface at a rate of 1.5" per second with a maximum weight capacity of up to 250 lbs.

The base features structural steel tubing and a durable powder coat finish complemented by 14-gauge steel columns and cross brace and a generous 26.5" travel range.



Electric height adjustable bases comply with the GREENGUARD Environmental Institute's GREENGUARD Indoor Air Quality standards for low-emitting products and materials.

Hand Crank

The Hand Crank adjustable table features structural steel tubing and a durable powder coat finish complemented by rounded columns, a cable management system and cascade feet. The ESI adjustable work surface brings aesthetics, functionality and durability to the workspace.

The crank base adjusts the height of the work surface at a rate of 1" of lifting movement per 5 turns of the crank mechanism with loads of up to 250 lbs. The work surface adjustment has a total range of 16", enabling the work surface to be adjusted from 26" to 42" in height.

- Hand crank drive mechanism — no electricity required!
- Excellent knee space and/or storage for mobile ped files
- Crank handle can be removed and stored to increase work area
- Meets all ANSI/BIFMA requirements



Simple

Crank turns easily for height adjustment.



Smart

Integrated cable management system



Built to Last

Durable structural steel tubing for strength and stability

Freight Terms

For adjustable table orders totaling under \$5k list, a 5% shipping fee (of the total list) will be charged. To meet the minimum total, orders must be shipped to one location, dock-to-dock.

Not available for 48-hour shipping. Call ESI for delivery information.

Electric Adjustable Tables

Features

- Supports loads up to 250 lbs
- 26.5" travel range (24" – 50.5")
- Travels at 1.5" per second for fast and quiet adjustability
- Uses just 3 amps of power
- Meets and exceeds ANSI/BIFMA standards
- Control switch — standard with 3-position memory settings
- Base consists of 14-gauge steel columns and a rigid 14-gauge cross brace
- Available in black only
- Due to the precision alignment of the height-adjustable columns, it is imperative the unit is properly leveled for optimum performance

Options

Electric Base With Work Surface						Base Only Includes columns, control box, cross brace & switch	
Work Surface Shape	Length	Width	Depth	Part #	List Price	Base Part #	List Price
Rectangle Work Surface	36	--	24	EL3624	\$2,231	MA3642BO	\$1,977
	42	--	24	EL4224	\$2,257	MA3642BO	\$1,977
	48	--	24	EL4824	\$2,297	MA4872BO	\$1,998
	60	--	24	EL6024	\$2,368	MA4872BO	\$1,998
	72	--	24	EL7224	\$2,406	MA4872BO	\$1,998
	36	--	30	EL3630	\$2,251	MA3642BO	\$1,977
	42	--	30	EL4230	\$2,276	MA3642BO	\$1,977
	48	--	30	EL4830	\$2,304	MA4872BO	\$1,998
	60	--	30	EL6030	\$2,371	MA4872BO	\$1,998
	72	--	30	EL7230	\$2,403	MA4872BO	\$1,998
Diagonal Work Surface	42	42	24	ELD424224	\$2,358	MA3642BO	\$1,977
	48	48	24	ELD484824	\$2,457	MA4872BO	\$1,998

Hand Crank Adjustable Tables

Features

- Hand crank drive mechanism — no electricity required!
- 5 turns per inch crank mechanism
- Leveling glide adjustment
- Multiple base widths available
- Load capacity: 250 lbs
- Structural steel tube construction for stability
- Rounded columns and cascade feet provide an aesthetic solution for any environment
- Excellent knee space and/or storage for mobile ped files
- Meets all ANSI/BIFMA requirements
- Work surface adjustment range of 16" (26" - 42")
- Pass-through cable management access holes and internal raceway in cross brace

Options

Crank Base With Work Surface						Base Only Includes columns, crank handle & cross brace	
Work Surface Shape	Length	Width	Depth	Part #	List Price	Base Part #	List Price
Rectangle Work Surface	30	--	24	CR3024	\$1,501	ATCK2624BO	\$1,263
	36	--	24	CR3624	\$1,532	ATCK3224BO	\$1,278
	42	--	24	CR4224	\$1,707	ATCK3824BO	\$1,315
	48	--	24	CR4824	\$1,726	ATCK3824BO	\$1,315
	60	--	24	CR6024	\$1,894	ATCK5624BO	\$1,524
	72	--	24	CR7224	\$1,932	ATCK5624BO	\$1,524
	30	--	30	CR3030	\$1,521	ATCK4424BO	\$1,427
	36	--	30	CR3630	\$1,552	ATCK3224BO	\$1,278
	42	--	30	CR4230	\$1,614	ATCK3824BO	\$1,315
	48	--	30	CR4830	\$1,733	ATCK4424BO	\$1,427
	60	--	30	CR6030	\$1,897	ATCK5624BO	\$1,524
	72	--	30	CR7230	\$1,950	ATCK5624BO	\$1,524
Diagonal Work Surface	42	42	24	CRD424224	\$1,644	ATCK2624BO	\$1,263
	48	48	24	CRD484824	\$1,737	ATCK3224BO	\$1,278

Available Laminate Colors

Work surfaces are available in four standard colors with custom laminates available upon request.

Edge detail on work surfaces is a 3mm edge band to match the laminate. T-mold in other colors available by request at no additional charge.

Color Name	Code
Folkstone Grey	FS
Hard Rock Maple	HM
Shaker Cherry	SC
Alabaster White	AL



Folkstone Grey



Hard Rock Maple



Shaker Cherry



Alabaster White

Note: Due to printing limitations, colors are not guaranteed to be accurately reproduced

Work Surface Shapes

Work surfaces are available in two standard shapes: rectangle and diagonal. Other sizes and shapes available upon request.

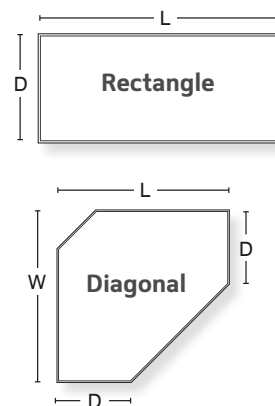
Ordering

When ordering an adjustable table base and work surface, indicate the "base with work surface" part number along with the color code as shown below.

EL3624 - FS

Work surface color code

Base with work surface
combo part number



Laptop Solutions

Lock It Up

The LTLOCKER Locking Laptop Drawer provides both storability and security. The quality 16-gauge metal construction offers a stable work environment that smoothly rolls on 16" ball bearing slides. The locking mechanism with two keys ensures that your computer is safe when not in use.



Locking Laptop Drawer



Features

- 16" ball bearing slides
- Lock deters theft
- Soft foam on front of drawer provides wrist support and comfort while in use
- Ventilation holes allow for laptop cooling
- Cord management slots in back of drawer
- Measures 16"W x 16"D x 2"H
- Supports up to 11 lbs

List Price

LTLOCKER \$138

Laptop Holder



Windows and Mac Compatible

For use with external keyboard and mouse

Features

- Corrects shortcomings of laptop design by increasing comfort for neutral head and neck posture with four height positions
- Includes A/C adapter plugged into power outlet to power four USB 2.0 ports
- 360° swivel
- Enhanced laptop support with the built-in quick-release mechanism and integrated on/off switch

DISCONTINUED

List Price

LAPTOP-DOC \$273

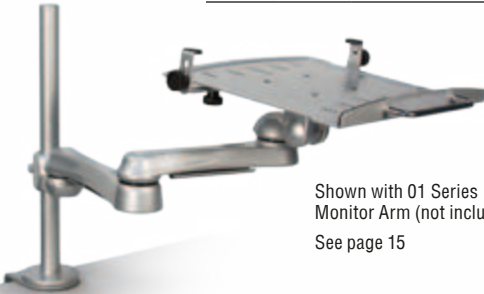
Laptop Holder

Features

- Adjustable security brackets keep laptop in place
- To avoid various ports located on the side of the laptop, the security brackets swivel out of the way
- Front-mounted handle for easy adjustments
- Fits laptops (diagonal): 12.1" - 15.4"

List Price

LTHMR \$116



Shown with 01 Series Monitor Arm (not included)
See page 15

Accessories

VIVID Series LED Task Lighting

Current workstations demand energy efficient lighting with a contemporary design. The new VIVID series task lights offer attractive lighting solutions and profiles that blend into any working environment.



Features

50,000-hour lamp life	Integrated cord management
Energy efficient LEDs	180° rotation at light source
CRI: 70, 3800K color temperature	Base weight: 6 lbs.

Options

17" wide	VIVID	List Price \$295
----------	--------------	----------------------------

Arced single arm, 21" reach

21" wide	VIVID-LE	List Price \$310
----------	-----------------	----------------------------

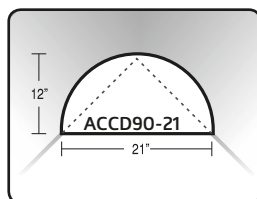
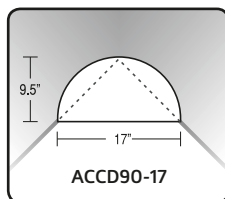
Two arms, 16" and 18" connected by an articulating joint
Total reach: 36"



Corner Diagonals



Corner Diagonals accommodate surfaces with thickness up to 1.375" (1 3/8"). Spacers (included) assure a secure fit.



Features

Converts 90° and diagonal corners to usable work areas
Includes spacers and felt furniture protectors
Accommodates surfaces with thickness up to 1.375" (1 3/8")

Options

17" wide	ACCD90-17	List Price \$127
----------	------------------	----------------------------

For use on corners less than 17" wide
Moves user 2" closer to work surface than ACCD90-21

21" wide	ACCD90-21	List Price \$141
----------	------------------	----------------------------

For use on corners less than 21" wide

Adjustable Footrests

Increase Comfort

Footrests increase comfort and decrease fatigue by redistributing body weight for healthier positioning of the spine and legs.



Features

Ideal for users who cannot rest feet comfortably on the floor
Platform slides back and forth on frame to allow ankle flexion and extension

Options

FR201	List Price \$96
--------------	---------------------------

Platform rests 3" from the floor

FR202	List Price \$102
--------------	----------------------------

Platform rests 6" from the floor

Desk Risers

Simple Solution

The simple yet innovative Desk Riser provides easy height adjustment for many desks. Raise the height of the work surface in one inch increments.



Do not stack more than 3 risers per leg

Features

Dimensions: 4" x 4"
Adjusts work surface height in 1" increments — stackable
Load capacity: 600 lbs of distributed weight
High-impact plastic
Set of 4

Options

DESK1	List Price \$51
--------------	---------------------------

CPU Holders & Printer Carts

Space Saving Storage

Protect your CPU from damaging environmental factors – keep it off the floor and out of the way with one of our CPU holders. Glide tracks and 360° swivel mechanisms provide easy access to the back of the CPU.



Easy Access CPU Holder

Features

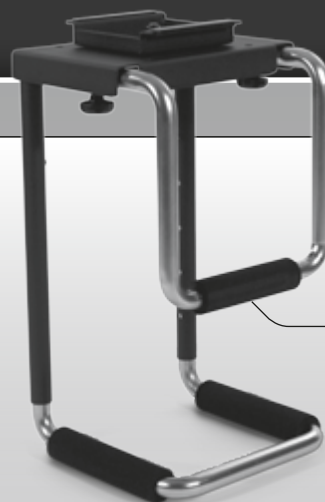
- Vertically mounts to underside of work surface
- 360° swivel
- No tools needed to make adjustments
- 17.75" glide track
- Adjustable width: 2.5" - 8.25"
- Adjustable height: 13" - 21"
- Load capacity: 100 lbs

Storable

CPU05

List Price

\$193



Non Porous Materials

The CPU05 uses a non porous foam material to prevent CPU damage. This material can also be cleaned and sanitized to maintain a germ-free environment.

Easy Adjust CPU Holder



Features

- Vertically mounts to underside of work surface
- 360° swivel
- No tools needed to make adjustments
- 13.4" glide track
- Adjustable width: 3.25" - 6"
- Adjustable height: 14" - 20"
- Load capacity: 55 lbs
- Fits CPUs 5" to 20" in overall height

Storable

CPUMINI

List Price

\$154

Flexible CPU Holder



Features

- Easy to install — vertically mounts to the underside of work surface
- 360° swivel
- No tools required to make adjustments
- 17.75" glide track
- Adjustable 60" straps
- Load capacity: 125 lbs

Storable

CPU01

List Price

\$139



Lockable CPU Holder

Secure CPU Storage

Features

- Vertically mounts to underside of work surface
- 360° swivel
- No tools needed to make adjustments
- 17" glide track
- Heavy-duty locking knob
- Steel holder with fiber glass reinforced resin-composite arm
- Adjustable width: 3.5" - 9.3"
- Adjustable height: 12.5" - 22.5"
- Load capacity: 85 lbs

		List Price
Lockable	CPULOCK	\$375

Storage and Mobility

Our CPU and utility carts are mounted on locking swivel casters for easy storage – just roll them under your desk and out of the way when not in use. Roll them back out again when you need access. They're quick and easy to assemble. No tools are required to make adjustments.

The ACPC Utility Cart allows printers, scanners or shredders to be placed under the work surface to free up valuable desktop space.



CPU Cart

Features

- Easy to assemble
- CPU sits in adjustable tray
- 4 swivel caster wheels (2 locking)
- No tools required to make adjustments
- Fits CPUs ranging from 3.5"W - 8.75"W
- Load capacity: 160 lbs



Tool-Free Assembly and Adjustments

		List Price
Mobile	CPU CART	\$115

Utility Cart

Features

- 18.75" x 15" platform
- 4 swivel caster wheels (2 locking)
- Use for printers, shredders and other office machines
- Includes nonslip pads
- Can be customized up to 19" x 19"
- Load capacity: 150 lbs



		List Price
Utility	ACPC	\$151

Environmentally Sensible

At ESI Ergonomic Solutions, we place a high priority on environmental concerns and are continuously working to recycle, reuse and refurbish materials and supplies.

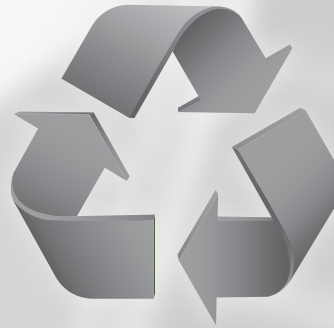
In the recent construction of our new facility, we kept the environment in mind in the design of the building and the materials used.

We believe that protecting Earth's delicate ecological structure is not only a sound business policy — it's good common sense.



Additionally, we pledge to:

- Continuously improve product design, manufacturing practices and procedures for use in the most sensible ways to protect our ecological structure
- Comply with all environmental laws by meeting or exceeding established minimum standards
- Strive to design working environments that facilitate efficiency, safety and comfort for the user
- Conserve natural resources in order to preserve our ecological environment
- Partner with ISO 9001 and RoHS compliant suppliers



Terms and Conditions

PRICING AND FREIGHT TERMS

ESI Ergonomic Solutions reserves the right to revise all prices and freight terms, at any time, without notice. For adjustable table orders totaling under \$5,000 List, a 5% shipping fee (of the total List) will be charged (call for Alaska, Hawaii and International rates). To meet the minimum total, orders must be shipped to one location, dock-to-dock.

PAYMENT AND CREDIT TERMS

Prior to customer's credit approval, payment must be made in full prior to processing the order. We accept corporate checks, VISA, MasterCard and American Express. Terms are net 30 days upon credit approval. If customer's credit has been approved, terms are net 30 days. In the event an account is past due, open orders or pending shipments may be held until the account returns to good standing. We reserve the right to cancel a customer's account or to require a prepayment. Contact Customer Service for details.

SHIPPING AND DROP SHIPPING

Most orders ship within 48 hours from receipt of Purchase Order. Custom orders and adjustable height table orders are not subject to this policy. Packages should be inspected upon receipt and ESI notified of any shortages or damages within five (5) business days of delivery. We are not responsible for damages or shortages occurring after delivery. Additional shipping charges will apply for expedited shipping services and re-routed deliveries. Requests such as "call before delivery" may not be accommodated. We are happy to drop-ship to any customer within the 48 contiguous United States at no additional charge.

DAMAGE/CLAIMS

ESI Ergonomic Solutions verifies order quantity and weight with our carrier before any shipments are sent. When receiving an order, first confirm quantity of boxes delivered with carrier quantity and inspect boxes for signs of damage. Do not sign for the shipment until it is verified. In the event product damage or shortage is present, a description must be recorded on the freight bill. Do not sign the freight bill if shipment quantity differs. Signing a freight bill without any notation relieves the carrier of any responsibility and serves as your acknowledgment to ESI that shipment was received in full. Should a damaged product be found upon opening the shipment, notify ESI immediately and retain all original products and packaging. ESI reserves the right to request return of damaged or defective products. Damage claims will not be accepted if received after five (5) days from date of delivery.

RETURNS

Qualifying merchandise may be returned to ESI for credit or replacement. Please call Customer Service at 800.833.3746 to obtain approval and a Return Authorization (RA) number. The assigned RA number and RA documentation must appear on all returned packages. A restocking fee of 25% (subject to change) will apply to all non warranty returns. All items must be returned in undamaged, re sellable condition and in original packaging and shipped at the customer's expense to:

ESI Ergonomic Solutions
ATTN: RETURNS DEPARTMENT
4030 East Quenton Drive,
Suite 101
Mesa, AZ 85215

Products must be returned within 60 days of receipt. Custom products (non-catalog and special order) are non returnable. Costs associated with installation, etc, of defective parts will not be reimbursed.

After packages have been inspected and approved, your account will be credited appropriately or a replacement will be sent if requested. No credit will be issued for damaged or unauthorized product returns.

WARRANTY

ESI Ergonomic Solutions provides a lifetime warranty on articulating arms and keyboard platforms and a 2-year warranty on palm rests. Warranty information on additional products is available upon request. Warranties are based on normal installation and use of products in a standard 8-hour shift. Warranties do not apply to damage in shipment caused by carriers and defects caused by improper installation, use or conditions. Products that are modified or tampered with in any way by any person other than an authorized ESI Representative will not be covered under warranty. Costs (such as installation or labor fees) incurred due to replacement of products will not be covered under warranty. In our continued effort to provide complete ergonomic solutions to our customers, it is our commitment to stand behind any ESI Ergonomic Solutions product.





Nationally Certified
Woman-Owned

Factory & Showroom

4030 E. Quenton Drive
Mesa, Arizona 85215

Mailing Address

P.O. Box 21239
Mesa, Arizona 85277-1239

Chicago Showroom

Merchandise Mart
Showroom 10-100

Phone: 480.517.1871

Fax: 480.517.1872

800.833.3746

www.esiergo.com